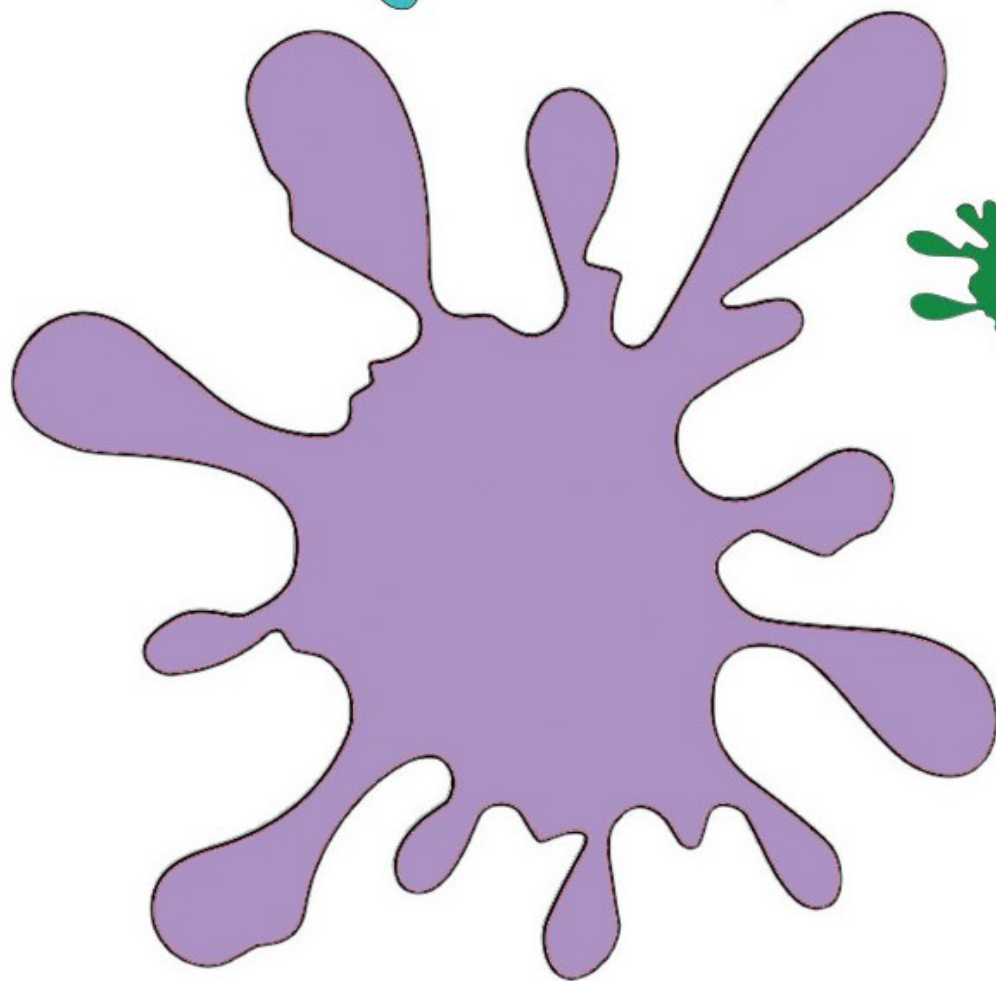
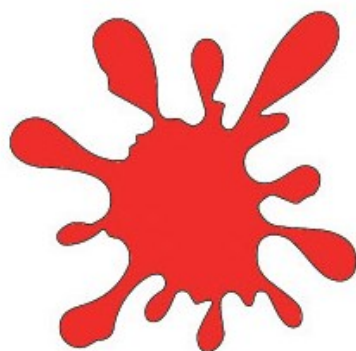
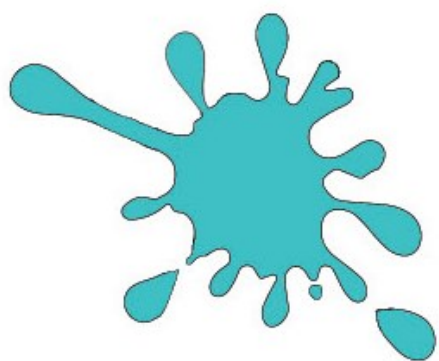
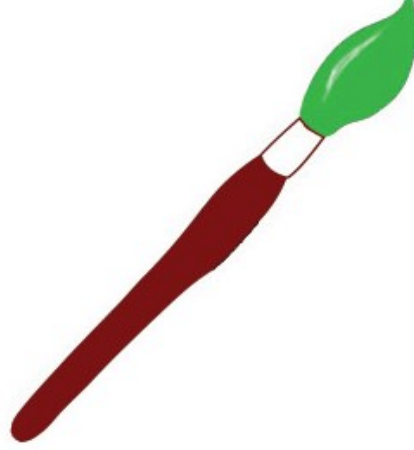


Qheu coulour  
qe c'ét-ti ?



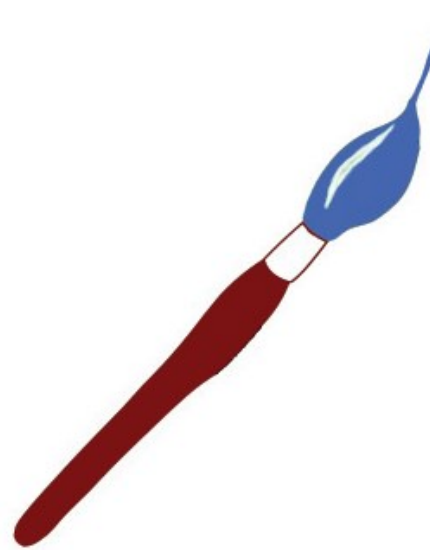
vert



oranje



blau



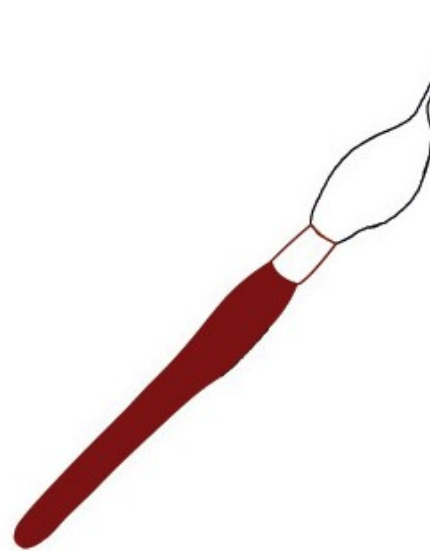
châtaigne

A red fountain pen nib is positioned diagonally, pointing towards the top right. The nib is connected to the word "châtaigne" by a thin red line that forms the letter 'c'.

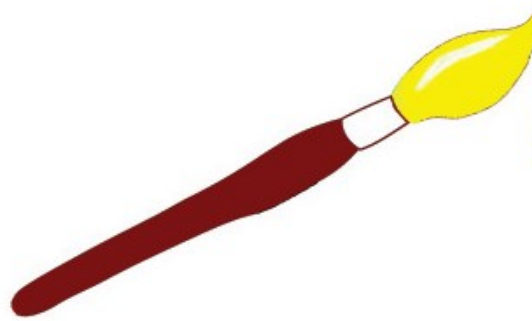
nair

A black fountain pen nib is positioned diagonally, pointing towards the top right. The nib is connected to the word "nair" by a thin black line that forms the letter 'n'.

ellam

A red fountain pen nib is positioned diagonally, pointing towards the top right. The nib is connected to the word "ellam" by a thin red line that forms the letter 'e'.

jaone

A yellow fountain pen nib is shown, with the word "jaone" written in a yellow cursive script. The nib is dark red with a silver-colored ferrule and a yellow tip.

rouje

A red fountain pen nib is shown, with the word "rouje" written in a red cursive script. The nib is dark red with a silver-colored ferrule and a red tip.

roze

A purple fountain pen nib is shown, with the word "roze" written in a purple cursive script. The nib is dark red with a silver-colored ferrule and a purple tip.

violet

A dark purple fountain pen nib is shown, with the word "violet" written in a dark purple cursive script. The nib is dark red with a silver-colored ferrule and a dark purple tip.